

COMPLETE LIST OF REINFORCING STEEL FOR ONE 40' SPAN

Mark	Size	Length	No. Req'd. when 'S'							Diagram
			40'	41'	42'	43'	44'	45'		
S ₁	5	25-0	42	44	46	48	50	52		Straight Rod
S ₂	5	25-9	20	21	22	23	24	25		See Drwg. 5495
S ₃	4	5'-7"			47					Straight rod
S ₄	4	4-5	68	70	72	74	76	78		See Drwg. 5495
S ₅	4	3-0	64	66	68	70	72	74		
S ₆		22-11			40					
S ₁₅	5	6-3-5			4 each length					
S ₁₆	5	2-4			4					Straight Rods
S ₁₇	5	1-3			4					

S ₁₈	5	24-9	2	1-9 ¹ / ₂																																																																																																																																																																																																																																																																																																																																																																																																																																																																																																																																																																																																																																																																																																																																																																																																																																																																																																																																																																																																																																																																																																																																																																																		</
-----------------	---	------	---	---------------------------------	--	--	--	--	--	--	--	--	--	--	--	--	--	--	--	--	--	--	--	--	--	--	--	--	--	--	--	--	--	--	--	--	--	--	--	--	--	--	--	--	--	--	--	--	--	--	--	--	--	--	--	--	--	--	--	--	--	--	--	--	--	--	--	--	--	--	--	--	--	--	--	--	--	--	--	--	--	--	--	--	--	--	--	--	--	--	--	--	--	--	--	--	--	--	--	--	--	--	--	--	--	--	--	--	--	--	--	--	--	--	--	--	--	--	--	--	--	--	--	--	--	--	--	--	--	--	--	--	--	--	--	--	--	--	--	--	--	--	--	--	--	--	--	--	--	--	--	--	--	--	--	--	--	--	--	--	--	--	--	--	--	--	--	--	--	--	--	--	--	--	--	--	--	--	--	--	--	--	--	--	--	--	--	--	--	--	--	--	--	--	--	--	--	--	--	--	--	--	--	--	--	--	--	--	--	--	--	--	--	--	--	--	--	--	--	--	--	--	--	--	--	--	--	--	--	--	--	--	--	--	--	--	--	--	--	--	--	--	--	--	--	--	--	--	--	--	--	--	--	--	--	--	--	--	--	--	--	--	--	--	--	--	--	--	--	--	--	--	--	--	--	--	--	--	--	--	--	--	--	--	--	--	--	--	--	--	--	--	--	--	--	--	--	--	--	--	--	--	--	--	--	--	--	--	--	--	--	--	--	--	--	--	--	--	--	--	--	--	--	--	--	--	--	--	--	--	--	--	--	--	--	--	--	--	--	--	--	--	--	--	--	--	--	--	--	--	--	--	--	--	--	--	--	--	--	--	--	--	--	--	--	--	--	--	--	--	--	--	--	--	--	--	--	--	--	--	--	--	--	--	--	--	--	--	--	--	--	--	--	--	--	--	--	--	--	--	--	--	--	--	--	--	--	--	--	--	--	--	--	--	--	--	--	--	--	--	--	--	--	--	--	--	--	--	--	--	--	--	--	--	--	--	--	--	--	--	--	--	--	--	--	--	--	--	--	--	--	--	--	--	--	--	--	--	--	--	--	--	--	--	--	--	--	--	--	--	--	--	--	--	--	--	--	--	--	--	--	--	--	--	--	--	--	--	--	--	--	--	--	--	--	--	--	--	--	--	--	--	--	--	--	--	--	--	--	--	--	--	--	--	--	--	--	--	--	--	--	--	--	--	--	--	--	--	--	--	--	--	--	--	--	--	--	--	--	--	--	--	--	--	--	--	--	--	--	--	--	--	--	--	--	--	--	--	--	--	--	--	--	--	--	--	--	--	--	--	--	--	--	--	--	--	--	--	--	--	--	--	--	--	--	--	--	--	--	--	--	--	--	--	--	--	--	--	--	--	--	--	--	--	--	--	--	--	--	--	--	--	--	--	--	--	--	--	--	--	--	--	--	--	--	--	--	--	--	--	--	--	--	--	--	--	--	--	--	--	--	--	--	--	--	--	--	--	--	--	--	--	--	--	--	--	--	--	--	--	--	--	--	--	--	--	--	--	--	--	--	--	--	--	--	--	--	--	--	--	--	--	--	--	--	--	--	--	--	--	--	--	--	--	--	--	--	--	--	--	--	--	--	--	--	--	--	--	--	--	--	--	--	--	--	--	--	--	--	--	--	--	--	--	--	--	--	--	--	--	--	--	--	--	--	--	--	--	--	--	--	--	--	--	--	--	--	--	--	--	--	--	--	--	--	--	--	--	--	--	--	--	--	--	--	--	--	--	--	--	--	--	--	--	--	--	--	--	--	--	--	--	--	--	--	--	--	--	--	--	--	--	--	--	--	--	--	--	--	--	--	--	--	--	--	--	--	--	--	--	--	--	--	--	--	--	--	--	--	--	--	--	--	--	--	--	--	--	--	--	--	--	--	--	--	--	--	--	--	--	--	--	--	--	--	--	--	--	--	--	--	--	--	--	--	--	--	--	--	--	--	--	--	--	--	--	--	--	--	--	--	--	--	--	--	--	--	--	--	--	--	--	--	--	--	--	--	--	--	--	--	--	--	--	--	--	--	--	--	--	--	--	--	--	--	--	--	--	--	--	--	--	--	--	--	--	--	--	--	--	--	--	--	--	--	--	--	--	--	--	--	--	--	--	--	--	--	--	--	--	--	--	--	--	--	--	--	--	--	--	--	--	--	--	--	--	--	--	--	--	--	--	--	--	--	--	--	--	--	--	--	--	--	--	--	--	--	--	--	--	--	--	--	--	--	--	--	--	--	--	--	--	--	--	--	--	--	--	--	--	--	--	--	--	--	--	--	--	--	--	--	--	--	--	--	--	--	--	--	--	--	--	--	--	--	--	--	--	--	--	--	--	--	--	--	--	--	--	--	--	--	--	--	--	--	--	--	--	--	--	--	--	--	--	--	--	--	--	--	--	--	--	--	--	--	--	--	--	--	--	--	--	--	--	--	--	--	--	--	--	--	--	--	--	--	--	--	--	--	--	--	--	--	--	--	--	--	--	--	--	--	--	--	--	--	--	--	--	--	--	--	--	--	--	--	--	--	--	--	--	--	--	--	--	--	--	--	--	--	--	--	--	--	--	--	--	--	--	--	--	--	----

NOTE:
For details not shown and general notes See Drwg. No. 5495
For details of pile bents See Drwg. No. 5497A

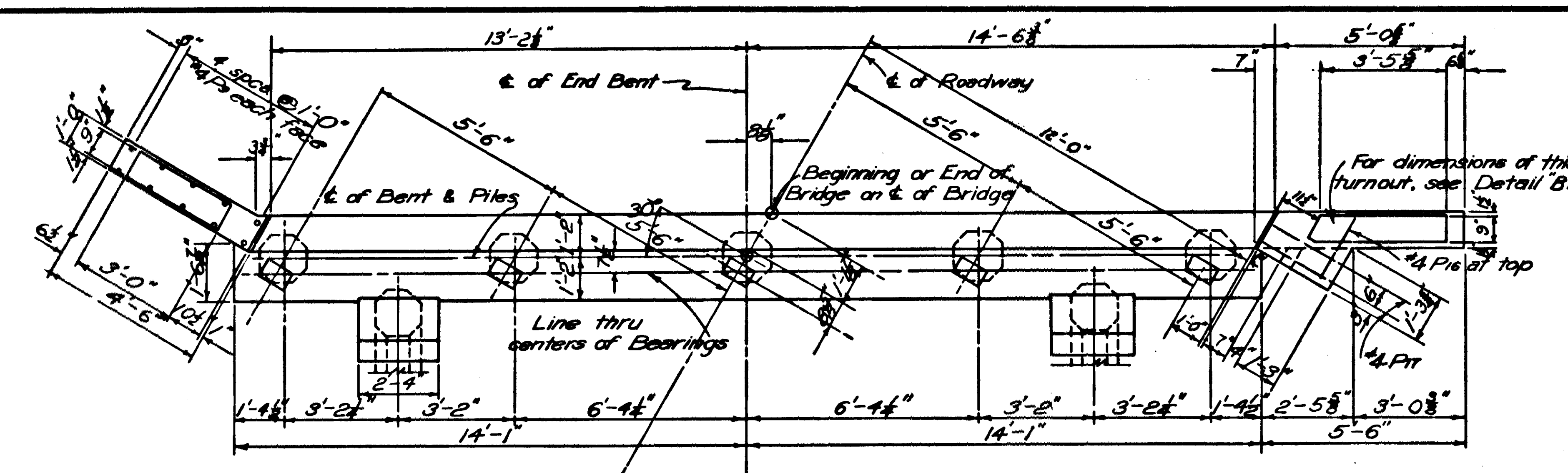
TABLE OF VARIABLE DIMENSIONS

Span c-c Jts = 'S'	Post Spacing			Strut Spacing	Reinforcing Spacing				Camber 'X'
	'b'	'b'	'c'		'd'	'e'	'f'	'g'	
40'	5'-8"	5'-6½"	5'-6½"	8'-7"	7"	1'-3"	7½"	7½"	
41'	5'-11"	5'-8"	5'-8"	8'-10"	6"	1'-2½"	6½"	½"	
42'	5'-11"	5'-10"	5'-10"	9'-1"	6"	1'-2"	6½"	¾"	
43'	5'-11"	6'-0"	6'-0"	9'-4"	5½"	1'-0"	6"	¾"	
44'	6'-2"	6'-1½"	6'-1½"	9'-7"	5½"	0'-10½"	6"	¾"	
45'	6'-7"	6'-3"	6'-1"	9'-10"	4½"	0'-10"	5"	¾"	

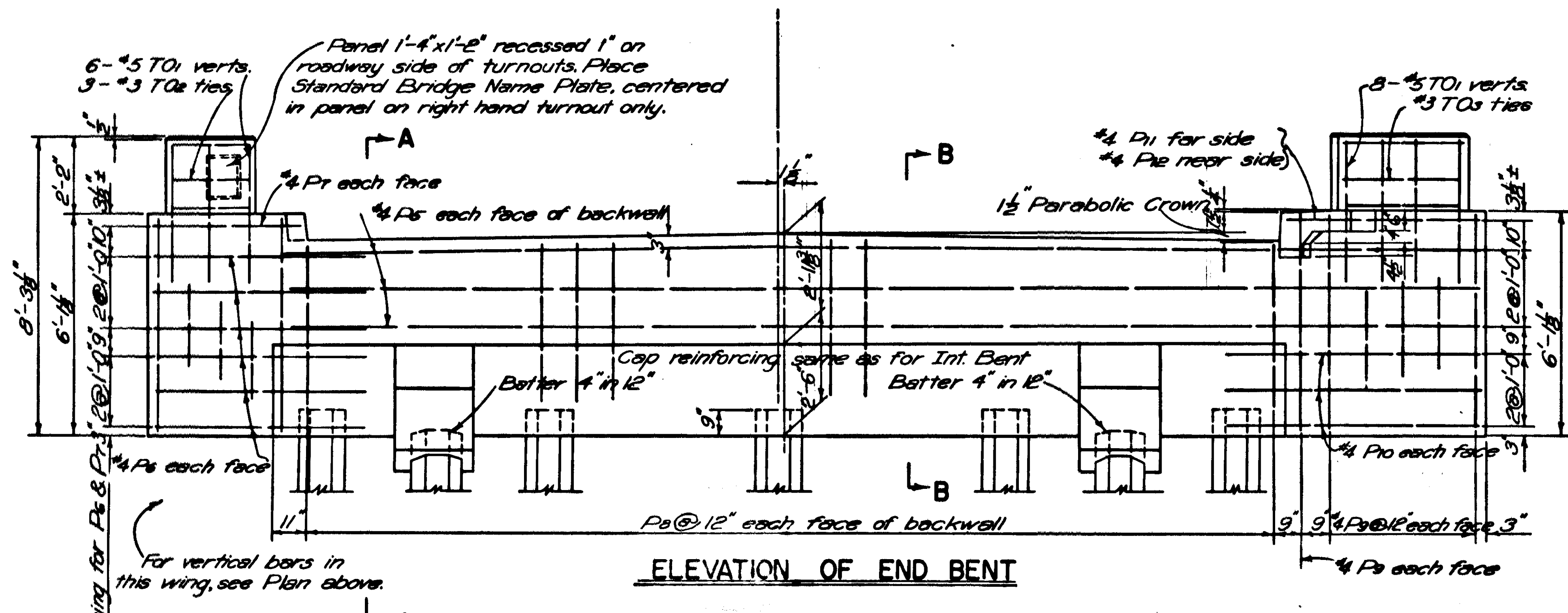
Revised: 1-28-59 FDM. Bar size numbers. Ring width.

APPROVED BY
W. L. ...
Bridge Design Engineer

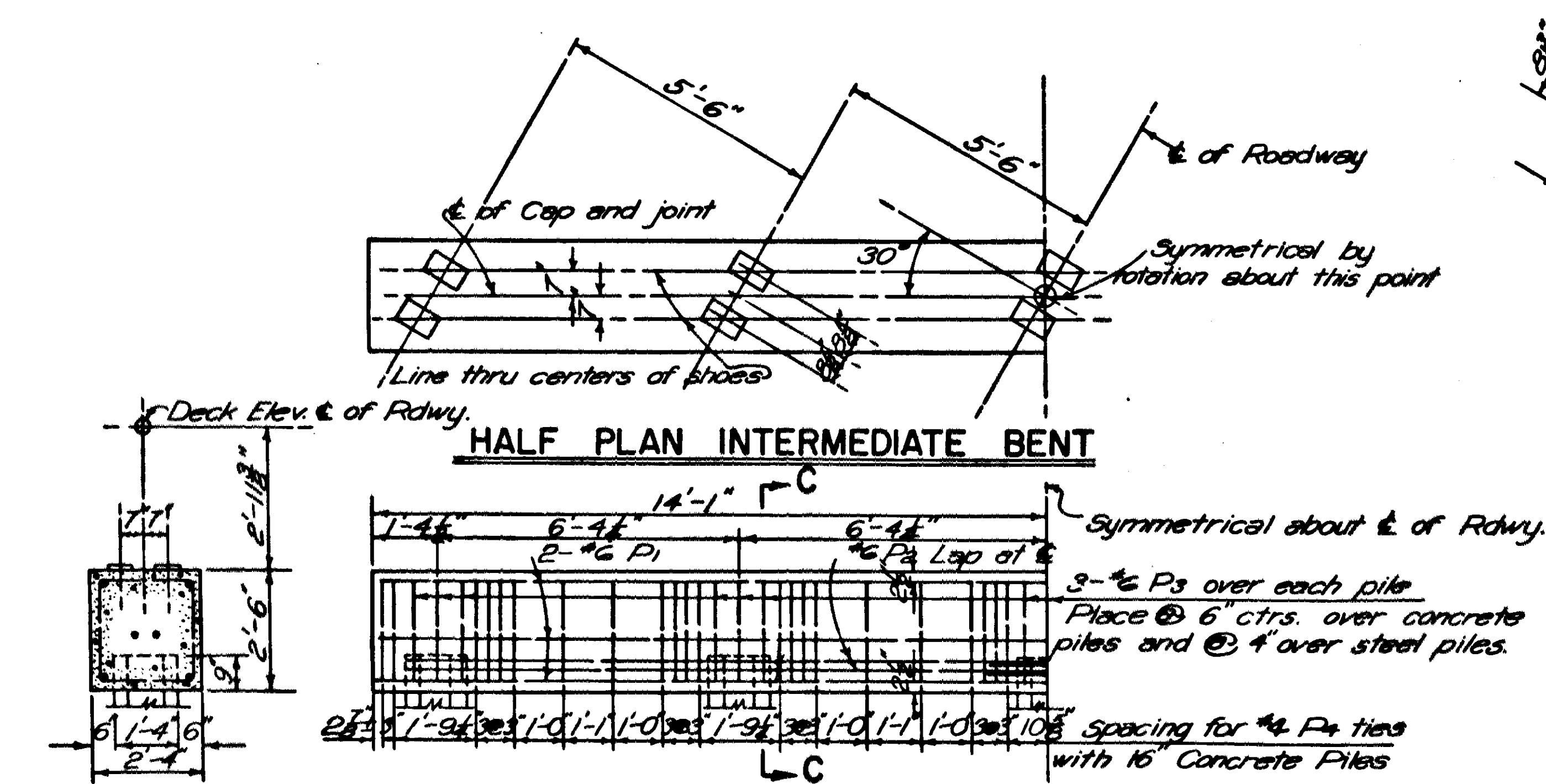
DETAILS OF STANDARD
40'-45' I-BEAM SPANS, 30' SKEW, RT. FWD.
24'-0" CLEAR ROADWAY, 1'-0" CURBS
STEEL PLATE GUARD RAIL, CONC. POSTS
ARKANSAS STATE HIGHWAY COMMISSION
LITTLE ROCK, ARK.
Drawn By: EAW Date: 11-3-52
Chd. By: JPK Date: 11-7-52
Scale: 3/8" = 1'-0"
and as noted
DRAWING NO. 5497



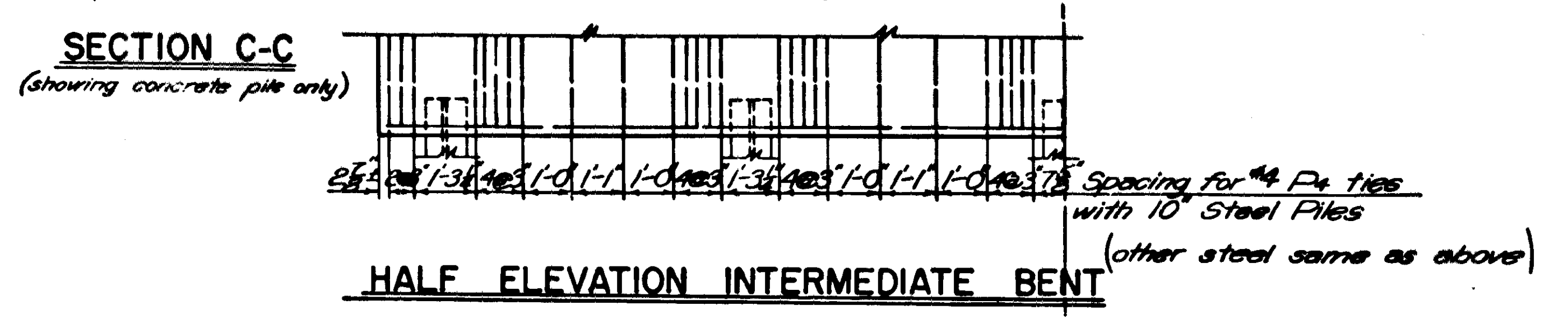
PLAN OF END BENT



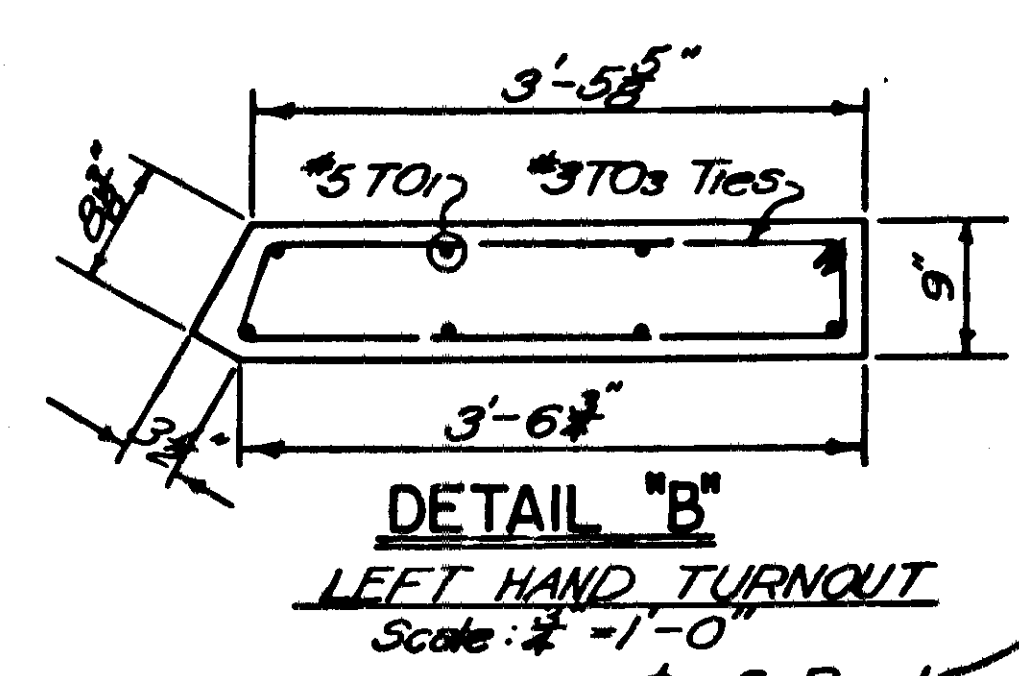
ELEVATION OF END BENT



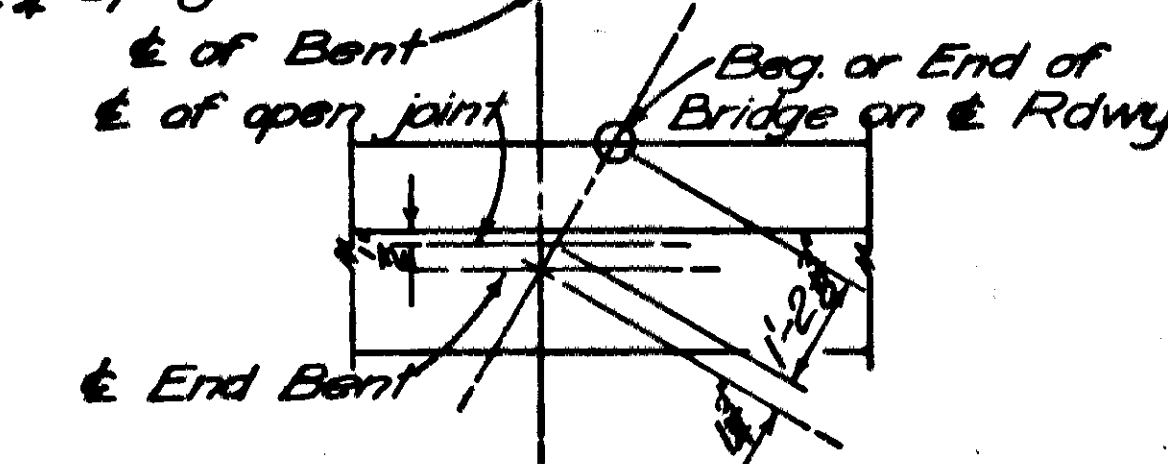
HALF PLAN INTERMEDIATE BENT



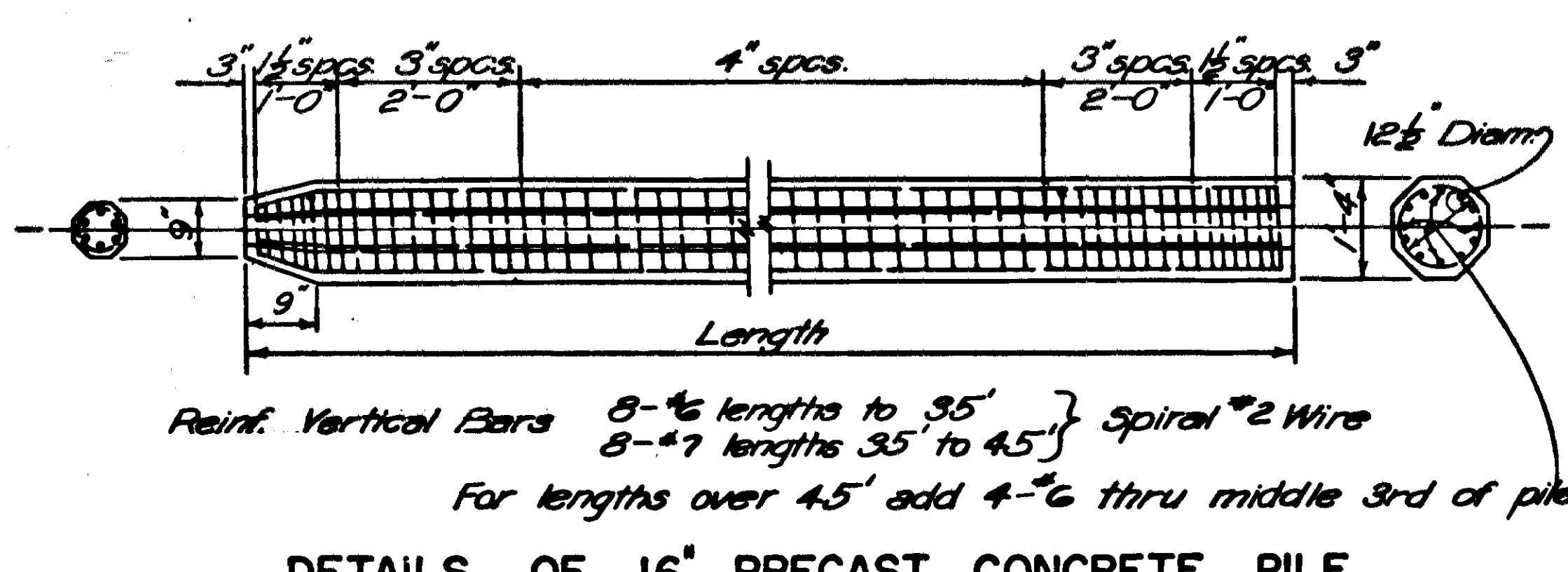
HALF ELEVATION INTERMEDIATE BENT



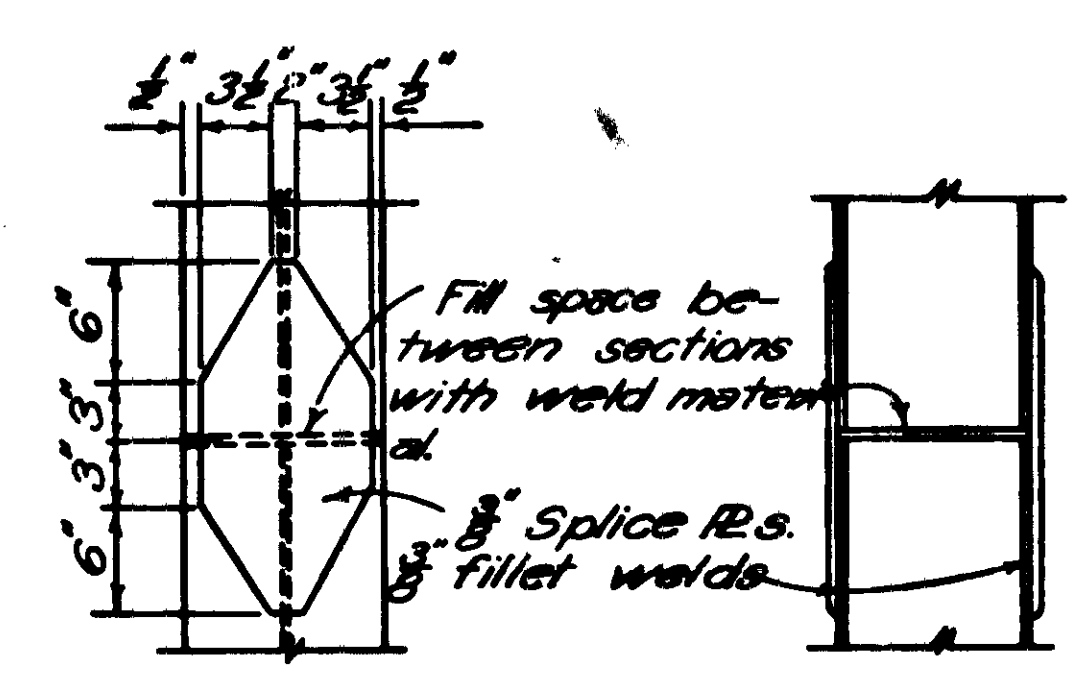
DETAIL "B" LEFT HAND TURNOUT



DETAIL SHOWING DISTANCE FROM BEG. OF BRIDGE TO & OPEN JOINT ALONG & RDWY.

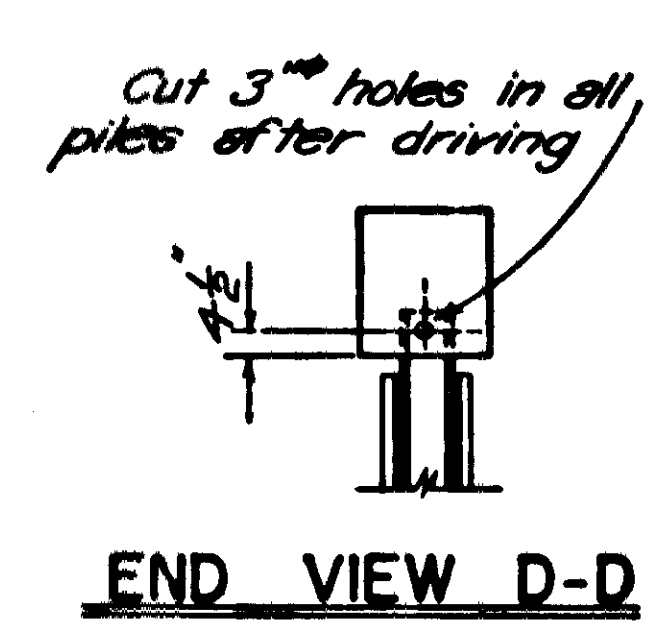


DETAILS OF 16' PRECAST CONCRETE PILE

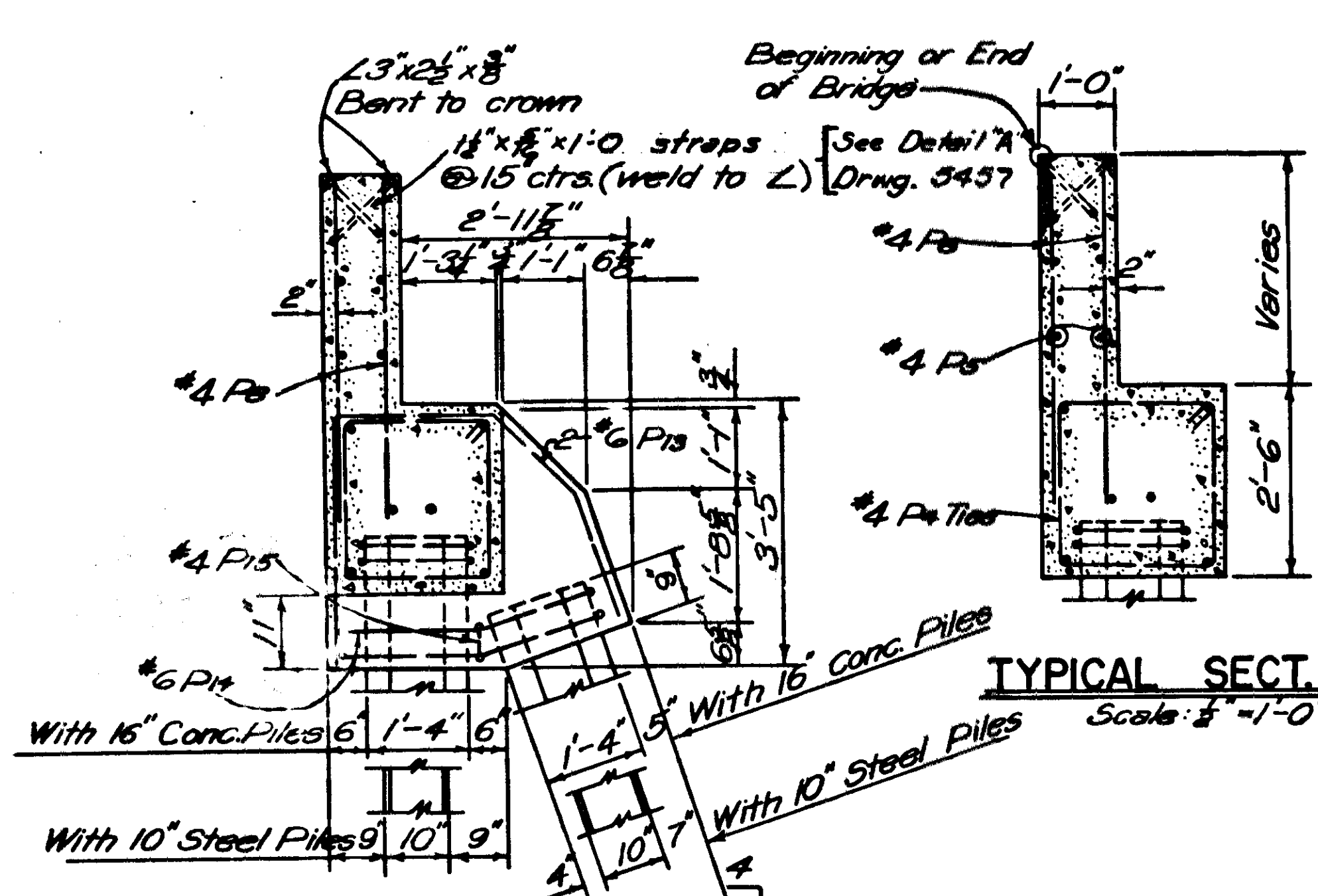


PILE SPICE DETAILS

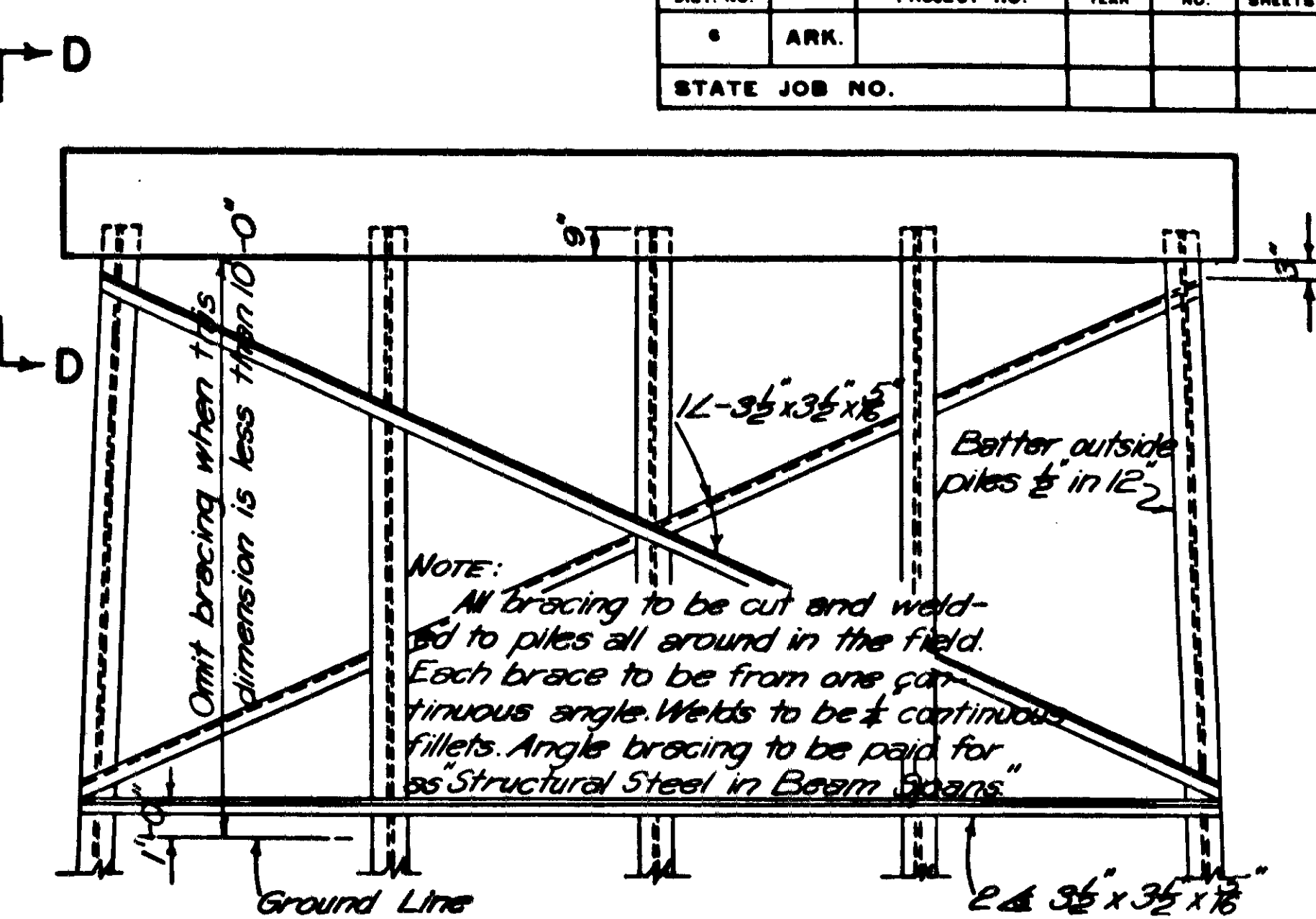
Generally all piles shall be driven full length and shall not be spliced except by permission of the Engineer.



END VIEW D-D



SECTION A-A AT BATTER PILES



TYPICAL BRACING INTERMEDIATE BENT

LIST OF REINFORCING STEEL

Bar	Size	No. In Bent	Length	Pin Dia.	Bending Diagram
P1	6	6	27'-10"	5/8"	
P2	4	4	30'-8"	3/4"	
P3	15	15	6'-3"	3/4"	
P4	4	4	5'-11"	1/2"	
P5	6	6	33'-0"	5/8"	
P6	12	12	6'-0"	1 1/2"	
P7	2	2	4'-2"		
P8	56	56	4'-3"		
P9	22	22	5'-9"		
P10	6	6	7'-0"		
P11	1	1	4'-9"		
P12	1	1	5'-0"		
P13	6	4	7'-11"	3/4"	
P14	4	4	11'-2"	3/4"	
P15	4	2	5'-3"	1 1/2"	
P16	1	1	2'-0"	5/8"	
P17	2	2	5'-0"	1 1/2"	
TD1	5	14	4'-0"	5/8"	
TD2	3	3	6'-11"	1 1/2"	
TD3	3	3	8'-2"	1 1/2"	

Dimensions are to ctrs. of bars.

* 5/8" Ties if steel piles are used.

NOTES

Steel Piles are to be driven to refusal. Concrete Piles to be driven to a minimum capacity of 28 Tons. See Layout for type of Piles. For Details of Superstructure and for General Notes, see Drawings 5497 and 5495.

REVISIONS

No.	Date	Description
1-28-58	FDN	Roadway & Curb Widths
1-23-59	FDN	Bar List, lengths & ties, Add Straps

DETAILS OF STANDARD PILE BENTS
40' TO 45' I-BEAM SPANS
24'-0" CLEAR RDWY. 1'-0" CURBS
30° SKEW RT. FORWARD

ARKANSAS STATE HIGHWAY COMMISSION
LITTLE ROCK, ARK.
Drawn By: W.H.M. Date: 10-15-52
Traced By: W.H.M. Date: 7-26-55
Checked By: J.L.K. Date: 11-2-52
Scale: 3/4" = 1'-0"
BRIDGE DESIGN ENGINEER
DRAWING No. 5497A

FED. ROAD No.	STATE	FED. AID PROJECT	FISCAL YEAR	SHEET No.	TOTAL SHEETS
6	Ark.	S5014	1953		
JOB No.	10326	3	102		

SCHEDULE OF BRIDGE QUANTITIES

BRIDGE NO.	CODE NO.	ITEM NO.	103	SP& 802	S. 103	SP& 804	SP-805-3	807	929	S.P.	
		ITEM UNIT OF BRIDGE	DRY EXCAVATION FOR STRUCTURES	CLASS "S" CONCRETE FOR BRIDGES	REINFORCING STEEL	CONCRETE PILING 16" OCTAGONAL	STEEL PLATE GUARD RAIL (10 GA.)	STRUCTURAL STEEL IN BEAM SPANS	BRIDGE NAME PLATES TYPE "C"	REMOVAL OF EXISTING BRIDGE STRUCTURES	
			UNIT	CU. YD.	CU. YD.	LB.	LIN. FT.	LIN. FT.	LB.	EACH	COMPLETE ITEM
2884	X031	End Bent No. 1	38	9.98	1353	180	7.82	389	1		
		Intermediate Bents No. 2-5		20.68	3380	565					
		End Bent No. 6	38	9.98	1353	180	7.82	389			
		Five 30'-0" I-Beam Spans		88.48	15165		300.00	59825			
		Totals for Bridge No. 2884	76	129.12	21251	925	315.64	60633	1	6%	
2885	X031	End Bent No. 1	48	11.92	1440	280	9.06	442	1		
		Intermediate Bents No. 2-7		35.28	5436	1399					
		End Bent No. 8	48	11.92	1440	280	9.06	442			
		Seven 40'-0" I-Beam Spans		164.04	28452		560.00	153100			
		Totals for Bridge No. 2885	96	223.16	36768	1959	578.12	153984	1	30%	
2886	X031	End Bent No. 1	40	10.53	1356	252	9.42	414	1		
		Intermediste Bents No. 2-5		22.56	3264	805					
		End Bent No. 6	38	10.53	1356	252	9.42	414			
		Five 30'-0" I-Beam Spans		88.60	15225		300.00	60275			
		Totals for Bridge No. 2886	78	132.22	21201	1309	319.84	61103	1	64%	
Totals for Job No. 10326			250	484.50	77220	4193	1212.60	275720	3	100%	

SCHEDULE OF
BRIDGE QUANTITIES
BEASLEY - LEPANTO
POINSETT COUNTY
ROUTE 143 SEC. 0

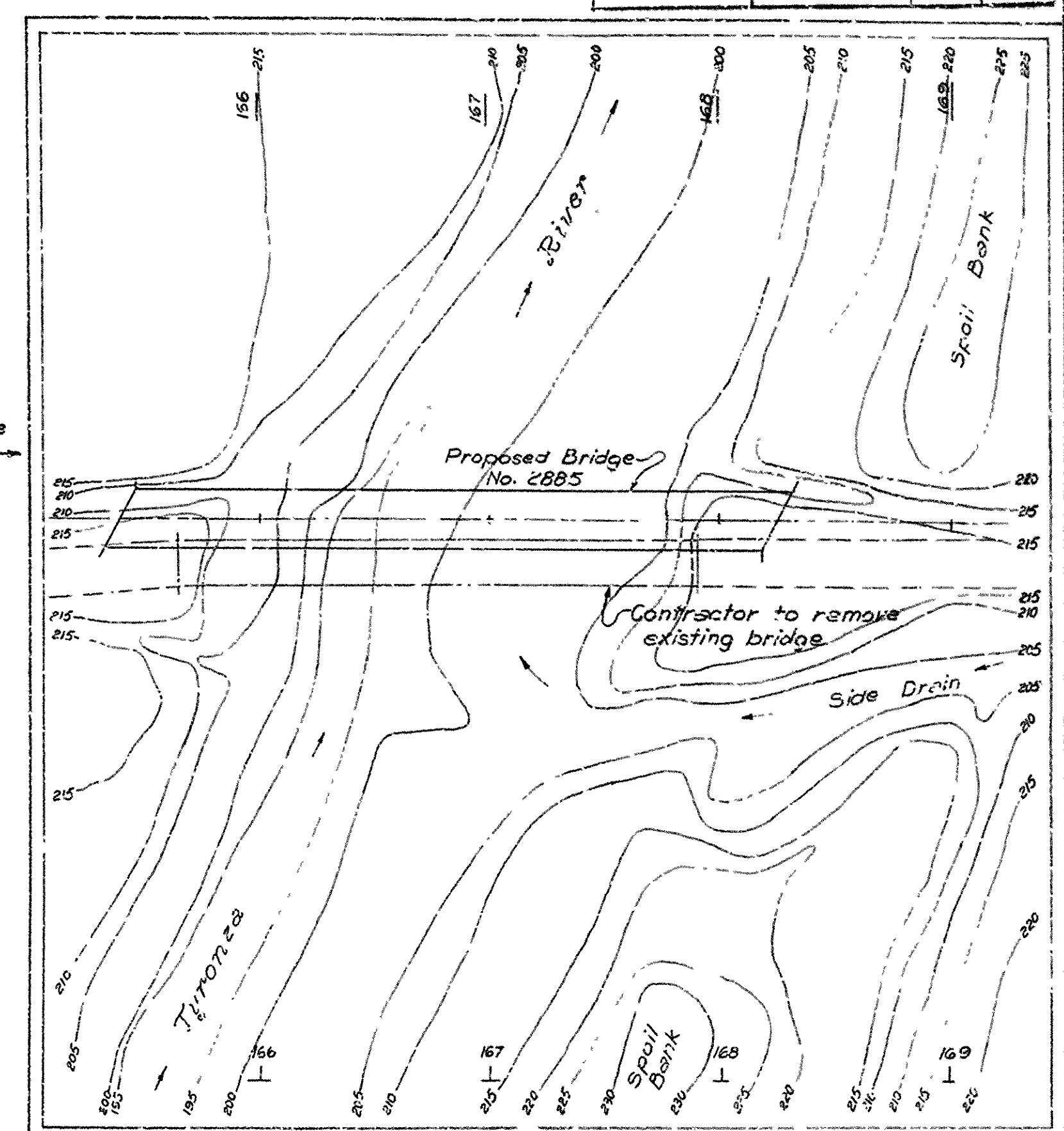
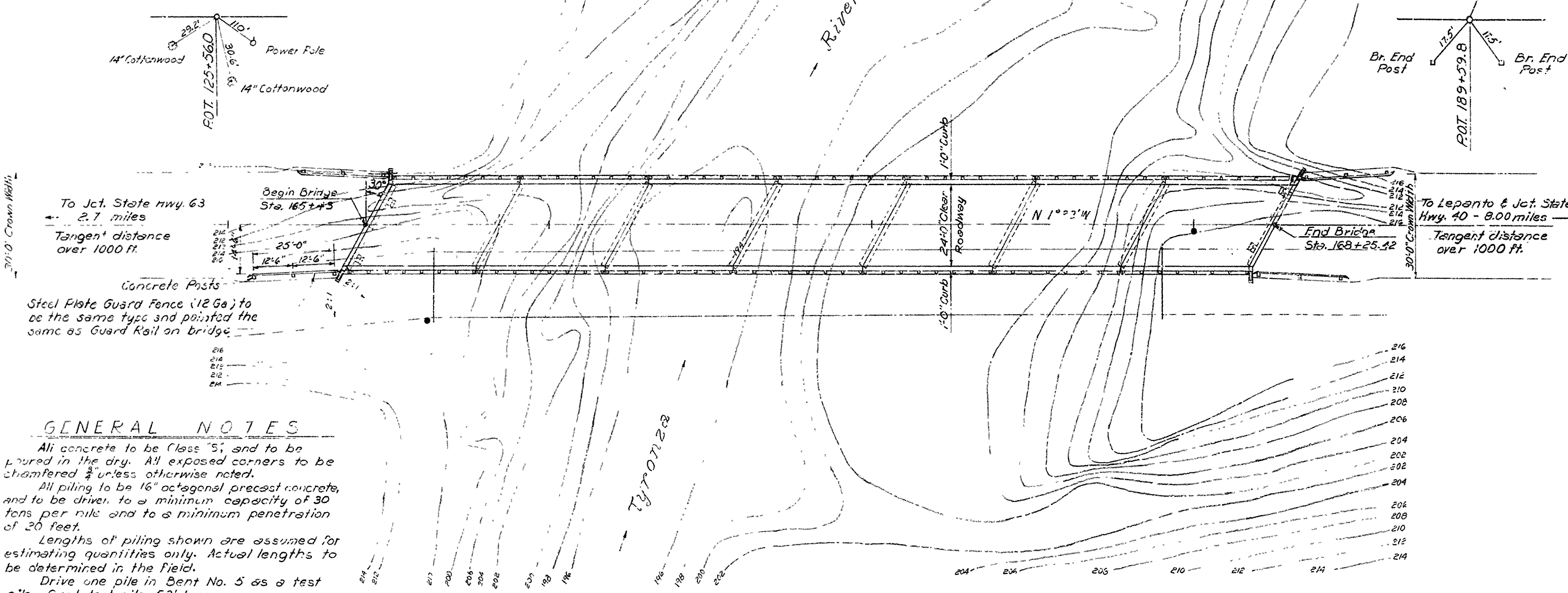
ARKANSAS STATE HIGHWAY COMMISSION
LITTLE ROCK, ARK.
Drawn By: J.E.H. Date: 8-26-53
Traced By: _____ Date: _____
Checked By: _____ Date: _____
Scale: _____
BRIDGE NO. 2884, 2885 DRAWING NO. 8768
2886

Revised
9-1-53 - H.B. By: 2884.

Bridge Design Engineer

FED. ROAD No.	STATE	FED. AID PROJECT	FISCAL YEAR	SHEET No.	TOTAL SHEETS
6	ARK.	550(4)	1953	22	102
JOB No.		10326	22	102	

RIGHT OF WAY DATA - NEW				
Sta. to Sta.	Lt. of E	Rt. of E	Total Width	
163+00	169+00	75'	75'	150'
169+00	170+00	75'	40'	135'
163+00	170+00	105'	Temporary	



GENERAL NOTES

All concrete to be Class "S", and to be poured in the dry. All exposed corners to be chamfered $\frac{1}{4}$ " unless otherwise noted.

All piling to be 16" octagonal precast concrete, and to be driven to a minimum capacity of 30 tons per pile and to a minimum penetration of 20 feet.

Lengths of piling shown are assumed for estimating quantities only. Actual lengths to be determined in the field.

Drive one pile in Bent No. 5 as a test pile. Cost test pile 52' long.

Volume occupied by embedded pile heads will not be included in pay quantity of concrete caps.

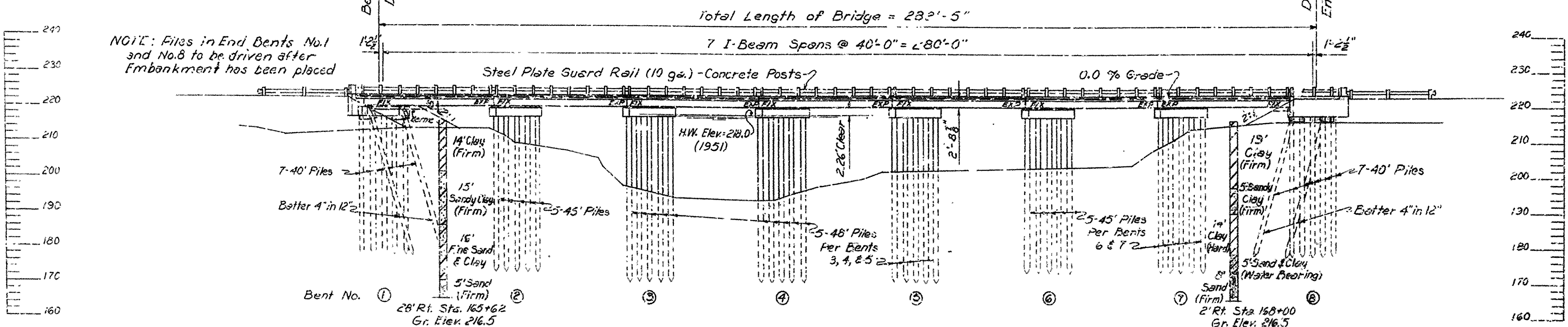
The Contractor shall remove the existing bridge, approximately 225' long consisting of fifteen 15'-0" timber spans on timber pile bents; 19'-0" clear roadway; 3" oak deck.

For Details of Standard Pile Bents, see Drawing No. 5497A.

For Details of Standard 40'-0" I-Beam Span, see Drawings No. 5495 & 5497.

SPECIFICATIONS: - Arkansas State Highway Commission Standard Specifications for Road and Bridge Construction adopted March 1, 1940.

QUANTITIES			
ITEM NO.	ITEM	QUANTITY	UNIT
103	Dry Excavation for Structures	96	Cu.Yd.
SP 6802	Class "S" Concrete for Bridges	223.16	Cu.Yd.
SP 6803	Reinforcing Steel	36765	Lb.
SP 6804	Concrete Filling - 16" octagonal	1959	Lin.Ft.
SP 805-3	Steel Plate Guard Rail (10Ga.)	578.12	Lin.Ft.
807	Structural Steel in Beam Spans	15,3384	Lb.
929	Bridge Name Plates (Type "C")	1	Each
SP-	Removal of Existing Bridge Structures	30 %	Complete Item



DESIGN SPECIFICATIONS - A.A.S.H.O 1953

LIVE LOADING: H-15

UNIT STRESSES: Class "S" Concrete (n=10) 18,000 #/sq. in.

Structural Steel 20,000 #/sq. in.

Reinforcing Steel 20,000 #/sq. in.

LAYOUT OF BRIDGE OVER TYRONZA RIVER

BEASLEY-LEPANTO

POINSETT COUNTY

ROUTE 143 SEC. 0

ARKANSAS STATE HIGHWAY COMMISSION

LITTLE ROCK, ARK.

Drawn By: J.E.H. Date: 5-12-53

Traced By: J.E.H. Date: 10-9-53

Checked By: J.E.H. Date: 10-9-53

Bridge No. 2885

DRAWING NO. 8370

REVISION	DATE	REVISION	DATE	FED. ROAD NO.	STATE	FED. AID PROJ. NO.	SHEET NO.	TOTAL SHEETS
				6	ARK.	DASH 66-116-5022	5	30
						JOB NO. 10750		
						2644A-3872A - QUANTITIES - 18474		

SCHEDULE OF BRIDGE QUANTITIES

BRIDGE NUMBER	CODE NUMBER	NAME PLATE TITLE	ITEM NO.	B01	SP# B02	B03	B04	SP # B05 **	SP # B05 **	B06	SP # B07 *	B09	B12	B03	SP JOB 10750
			UNIT	COMMON EXCAVATION FOR STRUCTURES - BRIDGE	CLASS 5 CONCRETE	BOILED LINSEED OIL	REINFORCING STEEL (GRADE 40)	PRECAST CONCRETE PILING (16" OCT)	PRECAST CONCRETE PILING (16" OCT)	STEEL PLATE GUARD BRIDGE RAILING	STRUCTURAL STEEL IN BEAM SPANS (A-36)	PREFORMED JOINT SEALER	BRIDGE NAME PLATES (TYPE C)	TEMPORARY BRIDGE STRUCTURES	REMODELING OF EXISTING BRIDGES
			CU. YD.	CU. YD.	GAL.	LB	LIN. FT.	LIN. FT.	LIN. FT.	LIN. FT.	LB	LIN. FT.	EACH	LUMP SUM	LUMP SUM
2644A	X071	TYRONZA RIVER	BENTS 3-0		22.00		1560								.30
			TOTALS FOR BRIDGE	0	22.00	0	1560	0	0	0	0	0	0	-	.30
2855A	X071	TYRONZA RIVER	BENTS 3-0		23.40		1690								.30
			TOTALS FOR BRIDGE	0	23.40	0	1690	0	0	0	0	0	0	-	.30
311A	X071	TYRONZA RIVER	BENTS 3-4		9.80		740								.15
			TOTALS FOR BRIDGE	0	9.80	0	740	0	0	0	0	0	0	-	.15
3872A	X071	TYRONZA RIVER	BENT 1	51	14.00	0.2	1470	180			469		1		
			BENT 2		6.64	-	869		275						
			BENT 3		5.97	-	433								.10
			BENTS 4-5		11.93	-	866								.15
			2-54 SPANS		62.36	8.0	13562			216	52771	102.0			.15
			TOTALS FOR BRIDGE	51	100.2	8.2	17220	180	275	216	53240	102.0	1	1	.25
			TOTALS FOR JOB 10750	51	156.1	8.2	21210	180	275	216	53240	102.0	1	1	1.60

* NOTE SP B07-4, MANDATORY NOTCH TOUGHNESS FOR BRIDGE STEELS SEE DWG 18482 FOR DESIGNATION OF MAIN LOAD CARRYING MEMBERS.

** SP REFERS TO SP B02-5

SCHEDULE OF BRIDGE QUANTITIES
TYRONZA RIVER BRIDGES AND APPROACHES
POINSETT COUNTY

ROUTE 63 9
135 1
118 SEC. 2

ARKANSAS STATE HIGHWAY COMMISSION

LITTLE ROCK, ARK.

DRAWN BY: TEB DATE: 2/15/74

DESIGNED BY: JCK DATE: 2-18-74

CHECKED BY: JED DATE: 2/17/74

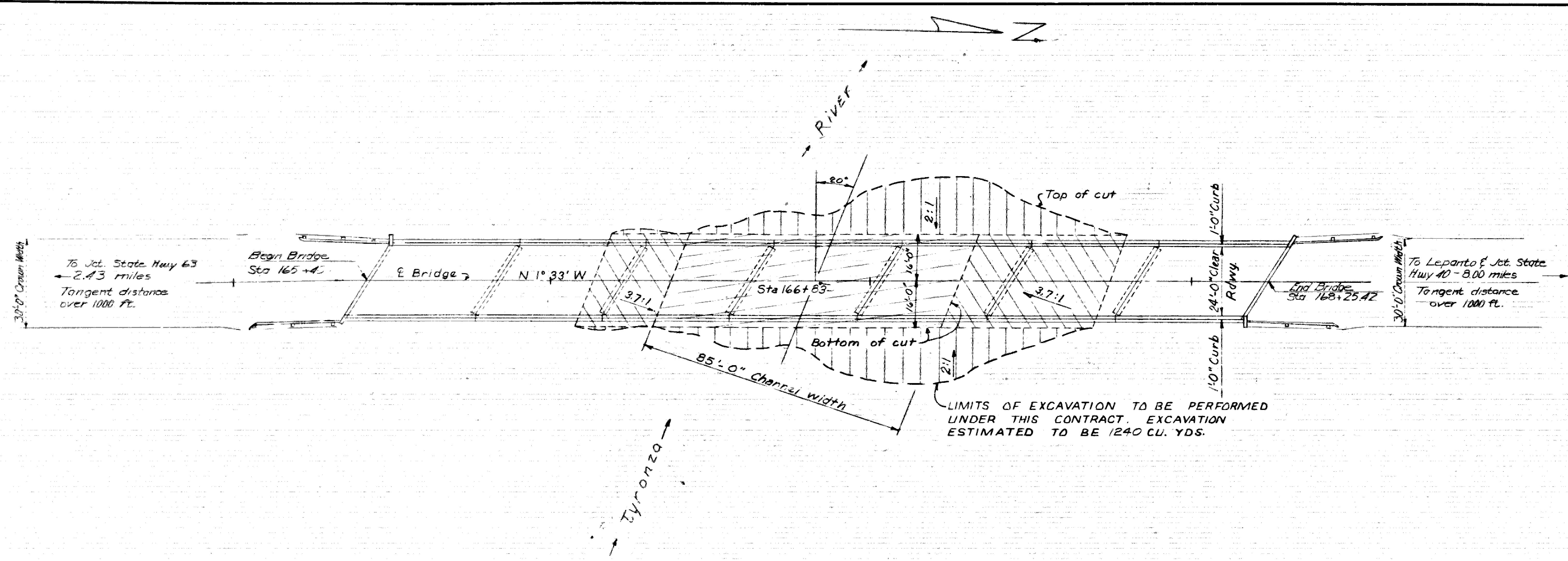
BRIDGE NO. 2644A, 2855A, 311A, 3872A

DRAWING NO. 18474

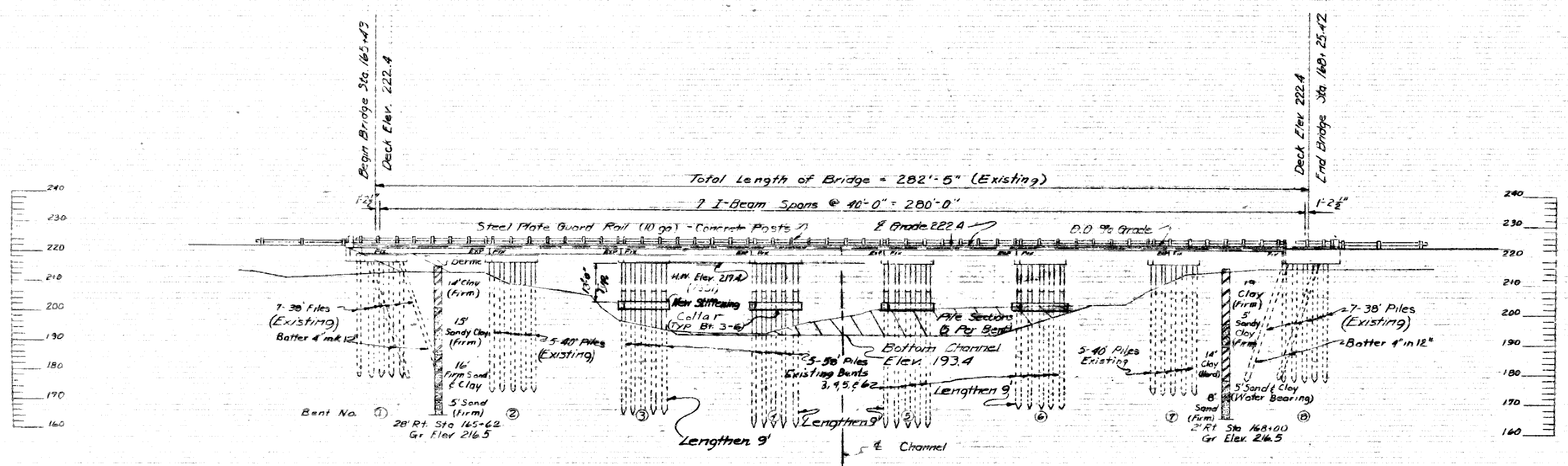
BRIDGE ENGINEER

33

DATE REVISED	DATE FILMED	DATE REVISED	DATE FILMED	FED. ROAD DIST. NO.	STATE	FED. AID PROJ. NO.	SHEET NO.	TOTAL SHEETS
				6	ARK.	DALW 66-74-C-0023		
				JOB NO.		10756	7	30
						2885A LAYOUT - 18476		



PLAN



ELEVATION

GENERAL NOTES

BENCH MARK: CENTERLINE CONCRETE DECK AT BEGINNING OF BRIDGE AT STATION 165+49, ELEV. 222.40.

ALL CONCRETE TO BE CLASS 'S' AND TO BE POURED IN THE DRY. ALL EXPOSED CORNERS TO BE CHAMFERED 3/4" UNLESS OTHERWISE NOTED.

FOR DETAILS OF REMODELING BENTS, SEE DWG. NO. 18483
 FOR DETAILS OF EXISTING PILE BENTS, SEE DWG. NO. 5497A
 FOR DETAILS OF EXISTING 40' I-BEAM SPANS, SEE DWG. NOS. 5495 AND 5497
 HALF SIZE DETAILS OF EXISTING BRIDGE MAY BE HAD ON REQUEST.

ALL PILING TO BE 16" OCTAGONAL PRECAST CONCRETE AND SHALL BE DRIVEN TO A MINIMUM CAPACITY OF 32 TONS PER PILE.

SPECIFICATIONS: ARKANSAS STATE HIGHWAY COMMISSION STANDARD SPECIFICATIONS FOR CONSTRUCTION, EDITION OF 1972 AND APPLICABLE SPECIAL PROVISIONS.

DESIGN SPECIFICATIONS: AASHTO 1973

LIVE LOADING: M15

UNIT STRESSES:

EXISTING STRUCTURE:	
CLASS 'S' CONCRETE (N=10)	1,200 PSI
REINFORCING STEEL	20,000 PSI
STRUCTURAL STEEL	18,000 PSI
NEW CONSTRUCTION	
CLASS 'S' CONCRETE (N=10)	1,200 PSI
REINFORCING STEEL	20,000 PSI

LAYOUT OF BRIDGE
 OVER TYRONZA RIVER
 POINSETT COUNTY
 ROUTE 135 SEC. 1
 ARKANSAS STATE HIGHWAY COMMISSION
 LITTLE ROCK, ARK.

DESIGNED BY: JEB DATE: 11/20/73
 CHECKED BY: JEB DATE: 11/20/73
 SCALE: 1" = 20'

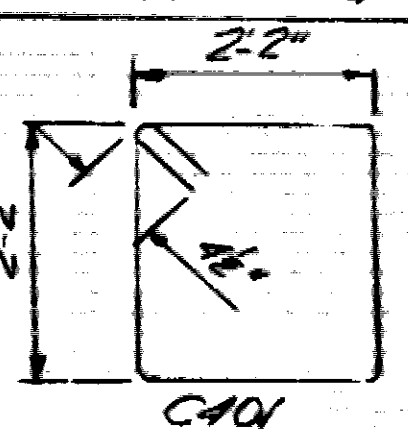
BRIDGE NO. 2885A DRAWING NO. 18476

DATE REVISED	DATE FILMED	DATE REVISED	DATE FILMED	FED. ROAD DIST. NO.	STATE	FED. AID PROJ. NO.	SHEET NO.	TOTAL SHEETS
				6	ARK.	PCW 66-74-C-005	15	30
JOB NO. 10756								
2644A-3872A REMODEL BENTS 18483								

BAR LIST - PER BENT

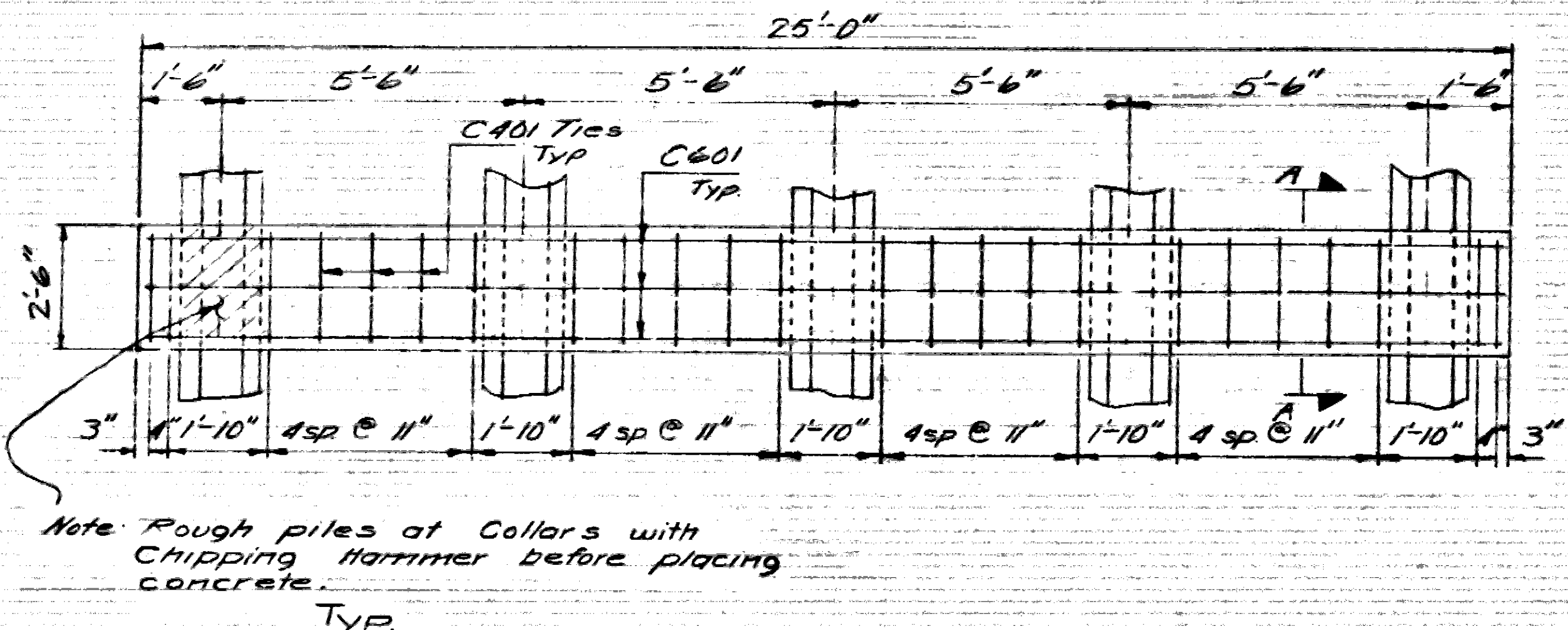
Mark	No. Req'd	Length	Pr. Dia.
C401	8	9'-2"	2"
C601	6	**	3"

BENDING DIAGRAM

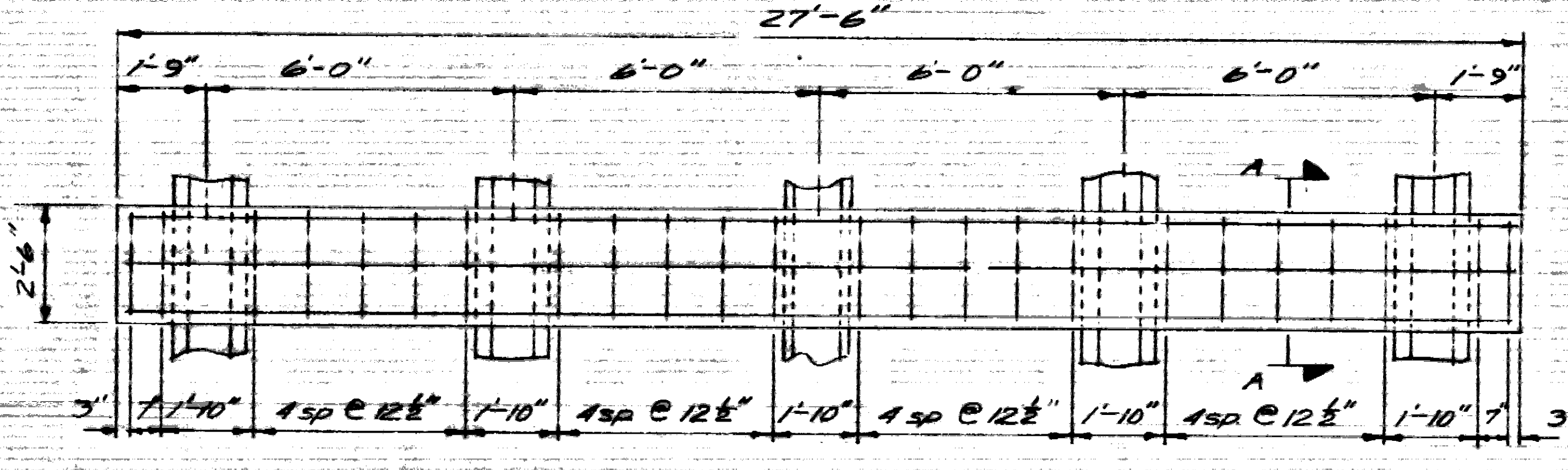


Dimensions are out to out of Bar.

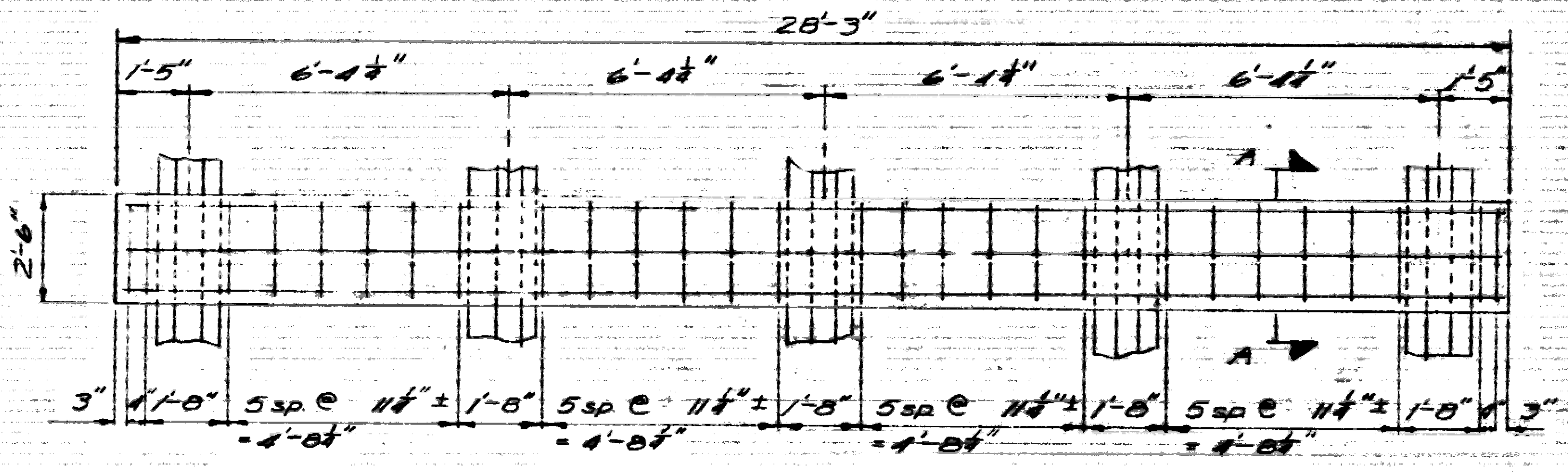
- * 24 Req'd. for BR 3311
- * 24 Req'd. for BR 2885
- * 24 Req'd. for BR 2644
- * 24 Req'd. for BR 3872
- ** Length = 24'-7" for BR 3311
- ** Length = 27'-10" for BR 2885
- ** Length = 27'-1" for BR 2644
- ** Length = 29'-1" for BR 3872



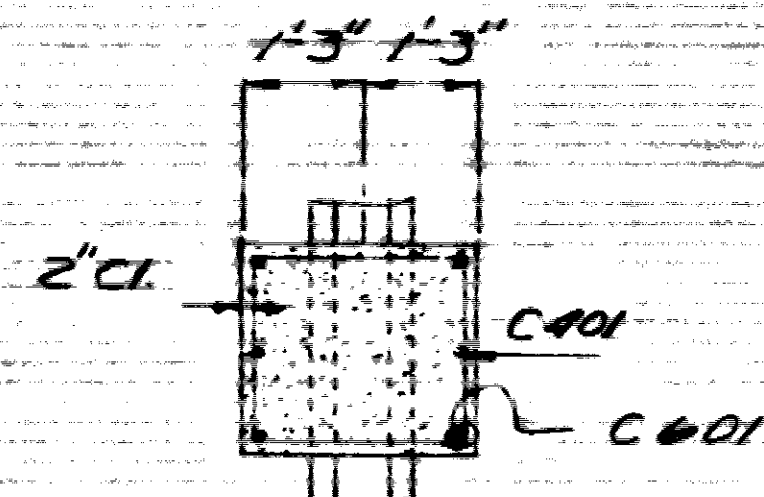
ELEVATION - COLLAR - BR. 3311
Bents 3 & 4



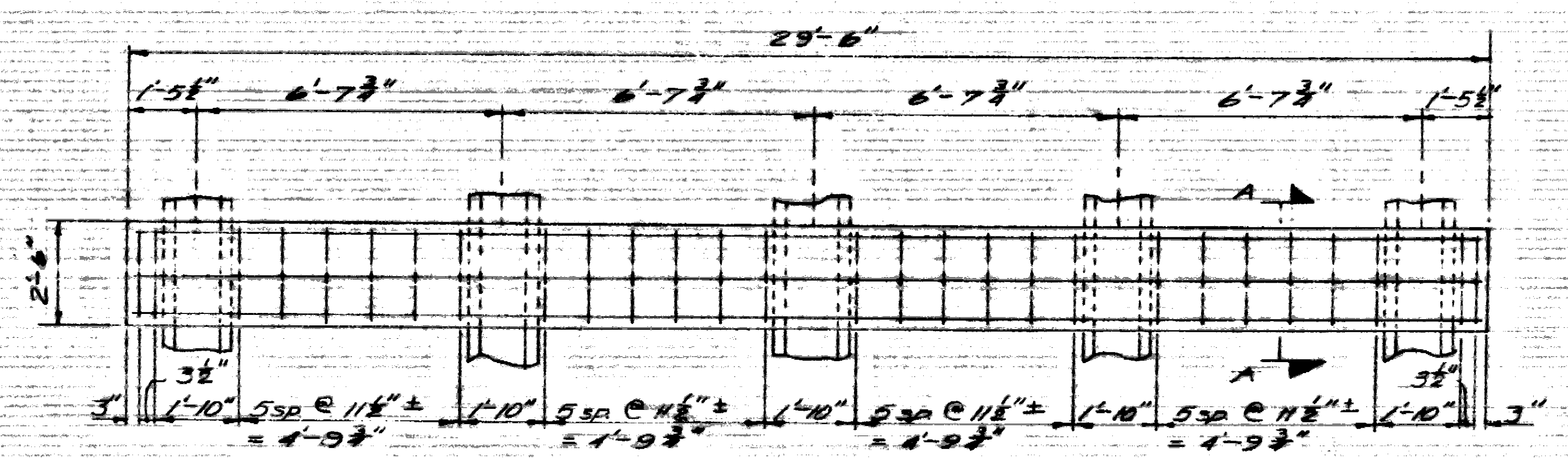
ELEVATION - COLLAR - BR. 2644
Bents 3, 4, 5 & 6



ELEVATION - COLLAR - BR. 2885
Bents 3, 4, 5 & 6



TYP SECTION A-A



ELEVATION - COLLAR - BR. 3872
Bents 2, 3, & 4

GENERAL NOTES
ALL CONCRETE SHALL BE CLASS "S". ALL EXPOSED CORNERS TO BE CHAMFERED 3/4".
REINFORCING STEEL SHALL BE ASTM A615, GRADE 40. SHOP LISTS AND BENDING DIAGRAMS TO BE SUBMITTED AND APPROVAL SECURED BEFORE FABRICATION IS BEGUN.

DETAILS OF REMODELING EXISTING BENTS
BRIDGES OVER
TYRONZA RIVER
POINSETT COUNTY
ROUTE 63
SEC. 9
ARKANSAS STATE HIGHWAY COMMISSION
LITTLE ROCK, ARK.

DRAWN BY: TFB DATE: 1/2/74
CHECKED BY: FH DATE: 1-2-74
DESIGNED BY: EM DATE: Jan 74
2644A, 2885A, 3872A
BRIDGE NO. 3311A, 3872A DRAWING NO. 18483